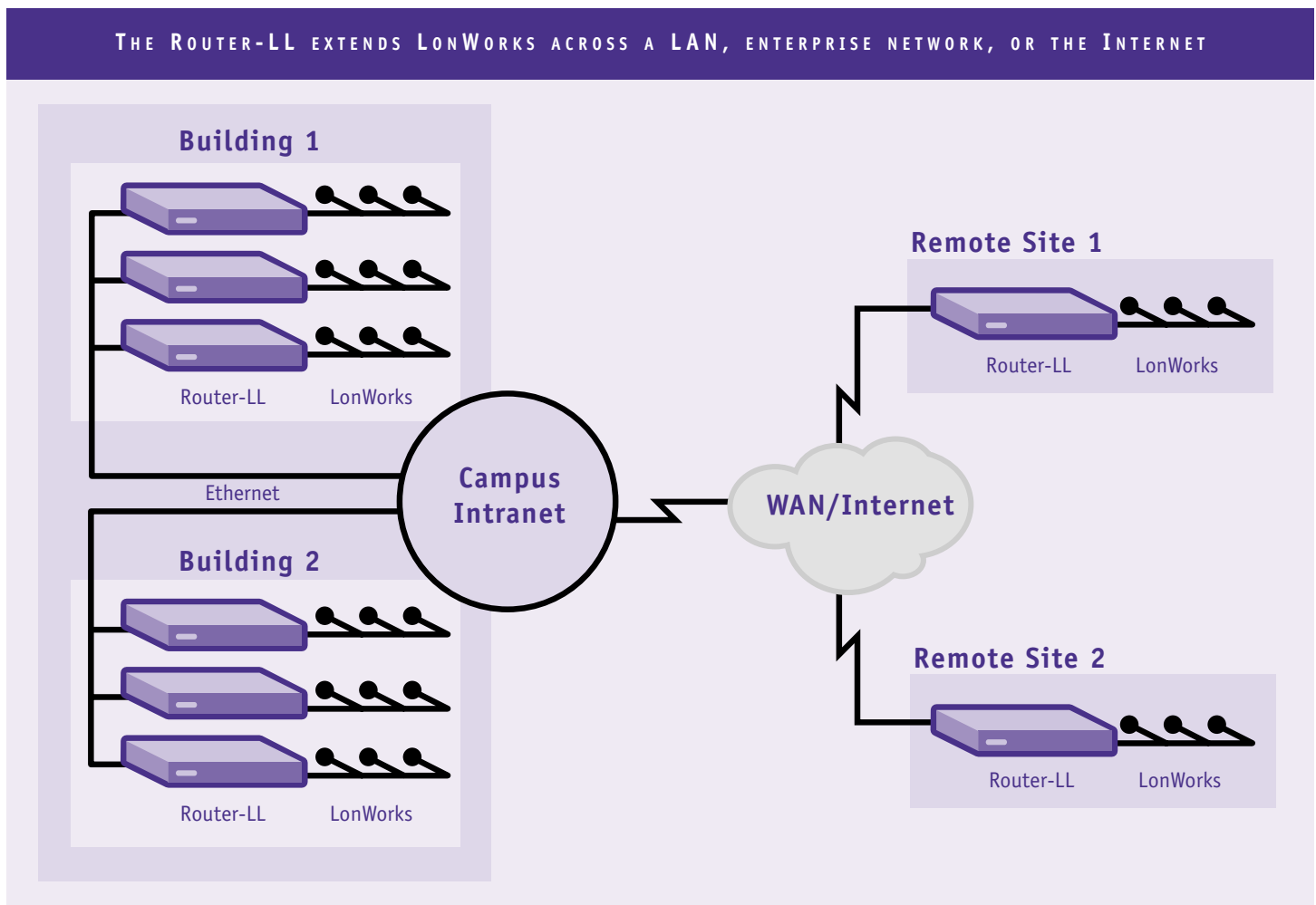




## CONNECT LONWORKS NETWORKS ACROSS INTERNET PROTOCOL

The Coactive Router-LL Multiprotocol LonTalk/IP Router connects multiple LonWorks systems to each other across a building or campus LAN or the Internet. By routing the LonTalk protocol over Internet Protocol (IP) and adhering to open IP standards, the Router-LL extends LonWorks to leverage the data networking infrastructure, enabling control systems to take advantage of corporate network resources such as remote access and wide-area links. A network architecture using the Router-LL can dramatically reduce your wiring costs and enhance system functionality.

### THE ROUTER-LL EXTENDS LONWORKS ACROSS A LAN, ENTERPRISE NETWORK, OR THE INTERNET





Router-LL Web-based Interface

### Connect LonWorks Networks Across Your Building, Campus or the Internet

The Router-LL allows you to integrate multiple LonWorks networks together, whether on separate floors in a building, distant buildings on a campus, or remote branches around the world. By routing LonTalk over IP, the Router-LL enables your control system to extend LonWorks communications across a LAN, enterprise network, or the Internet.

### Enhance System Functionality and Reduce Costs

The Router-LL allows separate control systems to be centrally monitored and managed as one integrated virtual LonWorks network. In addition, the Router-LL allows you to segment your control system where it makes sense both physically and logically, optimizing your network architecture. By reducing cabling and leveraging the IP infrastructure, as well as giving you a new freedom in network architecture design, the Router-LL adds flexibility and functionality to your control system while reducing costs.

### Simplify Installation and Maintenance

The Router-LL can be rack mounted with other networking devices, or wall mounted in a closet with control system equipment. Router-LLs appear on the LonWorks network as standard LonWorks routers, allowing configuration using standard network management tools (e.g., LonMaker). A web-based HTTP interface simplifies maintenance, while a direct RS232 terminal interface streamlines installation. Routing is performed at the LonTalk packet level, and therefore all features of LonWorks are supported including network management commands, LNS, authentication, and acknowledgement.

## SPECIFICATIONS

### Physical

- 1.7 in x 13.5 in x 7.3 in [4.3 cm x 34.3 cm x 18.4 cm]
- 5 lbs [2.3 kg]
- Rack or wall mountable

### Network Connections

- FT-10, TP/XF-1250 LonTalk transceiver
- AUI connector
- Ethernet 10Base-T connector

### Other Connections

- RS232 Serial (configuration)
- Universal AC power input

### Power Requirements

- 100-250 VAC, 47-63 Hz, 15 W

### Agency Approvals

- CE, FCC Part 15 Class A

### Environmental

- Operating temperature 0 - 60 C [32 - 140 F]
- Storage temperature -25 - 85 C [-13 - 185 F]

Coactive Networks. Connecting Networks to the Real World.

Coactive, the Coactive Logo, WebIO, Router-LE, Router-LL, and IOConnect are trademarks or registered trademarks of Coactive Networks, Inc. in the US and other countries. LonWorks, LonTalk and LonMaker are trademarks of Echelon Corporation. All other products and brand names are trademarks of their respective holders.

© Copyright 1998 Coactive Networks, Inc. Specifications are subject to change without notice.

DS-RLL-303



4000 Bridgeway, Suite 303, Sausalito, CA 94965 • Toll Free 1-888-COACTIVE  
 (415) 289-1722 • Fax (415) 289-1320 • info@coactive.com • http://www.coactive.com