

Coactive ROUTER-LE

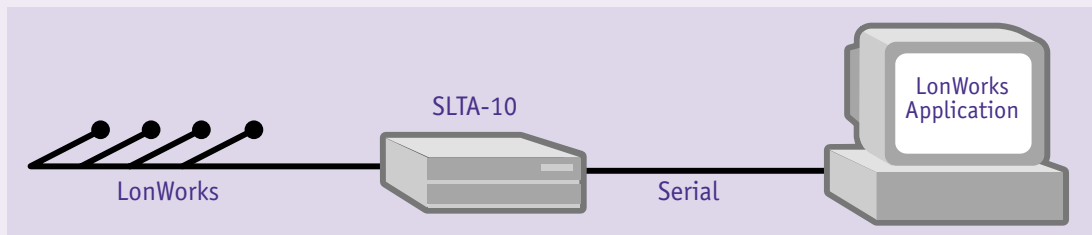


REMOTE ACCESS TO LONWORKS OVER ETHERNET

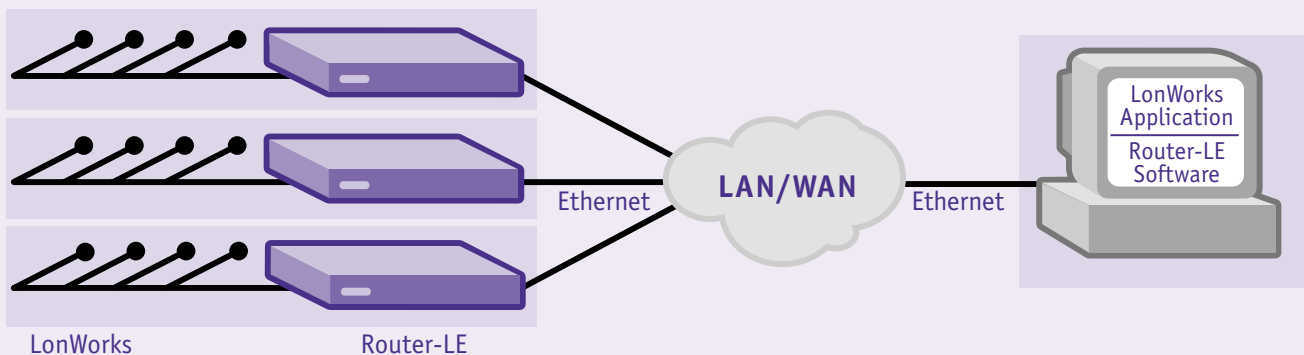
The Coactive Router-LE Remote Access Interface connects LonWorks software to control systems across an Ethernet LAN, enterprise network, or the Internet. A logical replacement for a LonTalk Adapter, the Router-LE is the ideal solution for gaining remote access to your systems with the same software while adding no wiring costs. The Router-LE adheres to open Internet Protocol (IP) standards, enabling monitoring and network management software applications to leverage building, campus, and wide-area data networking infrastructures. The Router-LE can reduce your cabling costs while increasing the flexibility of your control system.

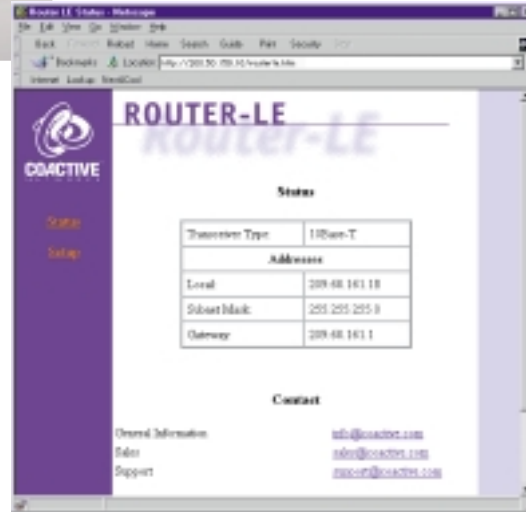
THE ROUTER-LE PROVIDES REMOTE ACCESS TO LONWORKS CONTROL SYSTEMS

Conventional Approach



Coactive Solution





Router-LE Web-based Interface

Remotely Access LonWorks Systems Using Existing Software

The Router-LE is the ideal way to gain central remote access to several control systems while still using the same software your LonWorks system was designed for. By extending LonWorks access over Internet Protocol (IP), the Router-LE acts as a logical replacement for a LonTalk Adapter such as an SLTA-10, PCC-10 or PCLTA-10, establishing remote access without any major software changes.

Move Your Operator Station Anywhere on the LAN, Enterprise Network, or Internet

If your facilities management workstation, MMI, monitoring station, or network management tool is now using a LonTalk Adapter, you can move this software to any computer on the campus or corporate network by using the Router-LE. Your control system now can take advantage of the LAN and WAN data networking infrastructure, avoiding dedicated LonWorks cabling to each operator PC.

Gain Flexibility and Reduce Costs

The Router-LE allows any kind of computer, anywhere on the enterprise network or Internet, to be effectively connected to your control system. By reducing cabling and giving you a new freedom in choosing the location and type of your operator workstations, the Router-LE adds flexibility and functionality to your control system while reducing costs.

Simplify Installation and Maintenance

The Router-LE can be rack mounted with other networking equipment, or wall mounted in a closet with control equipment. The Router-LE Software is available with a variety of standard LonWorks interface options; including LNS; non-PC platforms are supported via a porting kit, with several UNIX ports available. A web-based HTTP interface simplifies maintenance, while a direct RS232 terminal interface streamlines installation.

SPECIFICATIONS

Physical

- 1.7 in x 13.5 in x 7.3 in [4.3 cm x 34.3 cm x 18.4 cm]
- 5 lbs [2.3 kg]
- Rack or wall mountable

Network Connections

- FT-10, TP/XF-1250 LonTalk transceiver
- AUI connector
- Ethernet 10Base-T connector

Other Connections

- RS232 Serial (configuration)
- Universal AC power input

Power Requirements

- 100-250 VAC, 47-63 Hz, 15 W

Agency Approvals

- CE, FCC Part 15 Class A

Environmental

- Operating temperature 0 - 60 C [32 - 140 F]
- Storage temperature -25 - 85 C [-13 - 185 F]

Coactive Networks. Connecting Networks to the Real World.

Coactive, the Coactive Logo, WebIO, Router-LE, Router-LL, and IOConnect are trademarks or registered trademarks of Coactive Networks, Inc. in the US and other countries. LonWorks, LonTalk and LonMaker are trademarks of Echelon Corporation. All other products and brand names are trademarks of their respective holders.

© Copyright 1998 Coactive Networks, Inc. Specifications are subject to change without notice.

DS-RLE-303



4000 Bridgeway, Suite 303, Sausalito, CA 94965 • Toll Free 1-888-COACTIVE
 (415) 289-1722 • Fax (415) 289-1320 • info@coactive.com • http://www.coactive.com